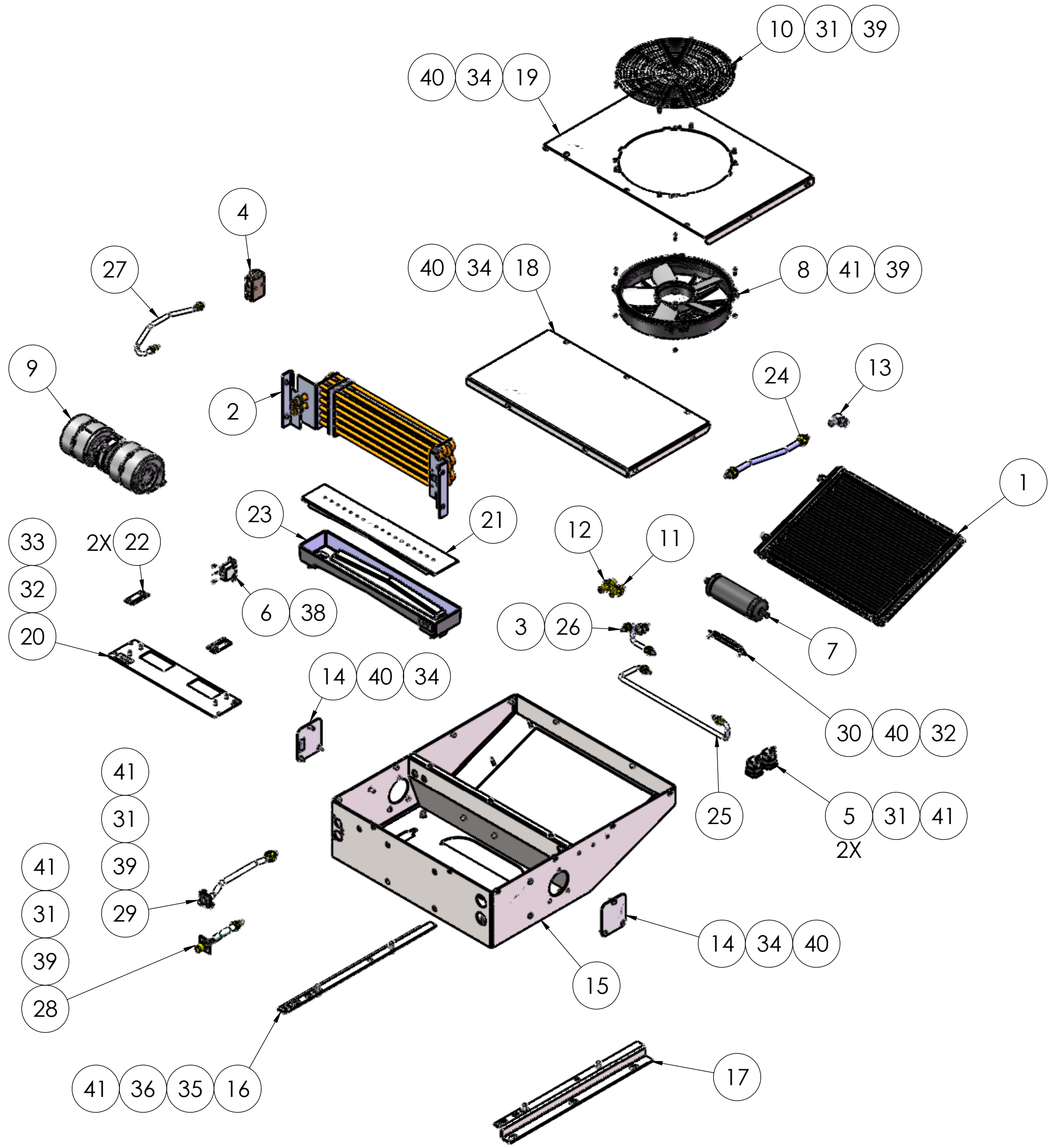


ITEM NO.	PART NUMBER	DESCRIPTION	QTY.
1	10-10-3025	CONDENSER COIL - 3025	1
2	10-20-7052	EVAPORATOR COIL 17.8 X 6 X 2.50, 4AC	1
3	12-10-3000	BINARY SWITCH - FEMALE 350/28	1
4	12-11-1001	BLOCK TXV 2 TON (EH)	1
5	12-53-4003	RELAY 24V WP W/RESISTOR	2
6	12-54-1001	THERMOSTAT-FIXED 24"	1
7	13-10-1005	DRIER - 3030,3110,3115,3130	1
8	14-10-1221	CONDENSER FAN, 12", 24V, PUSH	1
9	14-20-0043	BLOWER 24 VDC	1
10	14-90-1007	FAN GUARD - 12"	1
11	16-14-2661	#6 BULKHEAD STL	1
12	16-14-2662	#8 BULKHEAD STL	1
13	16-19-6211	ADAPTER FTG FO X MO 90DEG 3/4-16	1
14	16-40-1102W	PRESSURIZER RING COVER-WHITE	2
15	30-7052-001 REV1	HOUSING, UNIT	1
16	30-7052-002	MOUNTING BRACKET, ROOF TOP UNIT	1
17	30-7052-003	MOUNTING BRACKET, ROOF TOP UNIT	1
18	30-7052-004	COVER, ROOFTOP UNIT	1
19	30-7052-005	COVER, ROOF TOP UNIT	1
20	30-7052-006	ADAPTER BRACKET, BLOWER	1
21	30-7055-006	DRAIN PAN INSERT	1
22	30-7055-007	BLOWER BRACKET	2
23	32-7052-001	DRAIN PAN, ASSEM, ROOF TOP UNIT	1
24	35-7052-001	DISCHARGE LINE, SECOND TUBE	1
25	35-7052-002	TUBE, SUCTION	1
26	35-7052-003	SECONDARY LIQUID LINE	1
27	35-7052-004	SECONDARY LIQUID LINE, ADDITIONAL TUBE	1
28	35-7052-005	TUBE, SUCTION LINE	1
29	35-7052-006	DISCHARGE LINE, FIRST TUBE	1
30	501-1-0-2	DRIER BRACKET	1
31	36-010FWZP	FLAT WASHER, #10, ZINC-PLATED STEEL	14
32	36-014FWZP	FLAT WASHER, 1/4", ZINC, YELLOW CHROMATE-PLATED, STEEL	4
33	36-014CLNZP	1/4-20 LOCK NUT, WITH PLASTIC INSERT, ZINC PLATED, STEEL	2
34	36-014FWPP	FLAT WASHER, 1/4", PLASTIC, BLACK, OFF-WHITE	15
35	36-038FWZP	WASHER, FLAT, 3/8", ZINC PLATED	4
36	36-038C100MBHG5	BOLT, 3/8"-16 X 1.00" LONG, HEX HEAD, ZINC PLEATED, GRADE5	4
37	36-038LWZP	WASHER, LOCK, 3/8", ZINC PLATED	4
38	36-008-012ZSGSS	SELF-TAPING SCREW, #8, 1/2" LONG, FLANGED HEX HEAD, STAINLESS STEEL	2
39	36-010C034MPPZP	BOLT, #10-32, 3/4" LONG, PHILL, SS	12
40	36-014C034MPPSS	1/4-20, 3/4IN LONG, PAN HEAD	17
41	36-014BLWSS	LOCK WASHER 1/4", BELLEVILLE SPRING, STAINLESS STEEL 18-8	14

REVISIONS						
ECR	REV.	DESCRIPTION	DATE	DR.	AUTH.	CHK.
4031	0	INITIAL RELEASE	8/28/2023	MO	AS	MO



47-7052-2C912: ROOF TOP UNIT, 24V

NOTES:

1. THIS MODEL 47-7052-2C912 AND DRAWING 90-7052-004-01 ARE REQUIRED FOR COMPLETE PRODUCT DEFINITION. MODEL AND DRAWING REVISION LEVEL SHOULD BE THE SAME.

IMPERIAL INCH FORMAT: UNLESS OTHERWISE SPECIFIED DIMENSIONS ARE IN INCHES WITH METRIC CONVERSION IN (MILLIMETERS)		INTERPRET GEOMETRIC TOLERANCING PER: ASME Y14.5-2009		VISIONAIRE, INC. 1401 VALLEY VIEW LN #135 IRVING, TX 75061	
UNLESS OTHERWISE SPECIFIED TOLERANCES ON: ±.04 ±.020 ±XXX ±2°		DRAWN MO 8/28/23		TITLE: 47-7052-2C902-PARTS BREAKDOWN	
{0}DEC {00}DEC DEC ANG ±(1.0) ±(.5) ±[XXX]		CHECKED AS 8/28/23		REV 0	
SURFACES HOLE DIA HOLE SPACING HOLE LOC AA ±.005 ±.015 ±.03 [±.13] [±.38] [±.8]		ENG APPR. MO 8/28/23		SIZE DWG. NO. REV C 90-7052-004-01 0	
DIMENSION IN (PARENTHESES) ARE FOR INFORMATION ONLY. CRITICAL DIMENSIONS MARKED ()		THIRD ANGLE PROJECTION		SCALE: 1:24 SHEET 1 OF 1	
MATERIAL SEE NOTES DO NOT SCALE DRAWING		PROPRIETARY AND CONFIDENTIAL THE INFORMATION CONTAINED IN THIS DRAWING IS THE SOLE PROPERTY OF VISIONAIRE, INC. ANY REPRODUCTION IN PART OR AS A WHOLE WITHOUT THE WRITTEN PERMISSION OF VISIONAIRE, INC. IS PROHIBITED.			