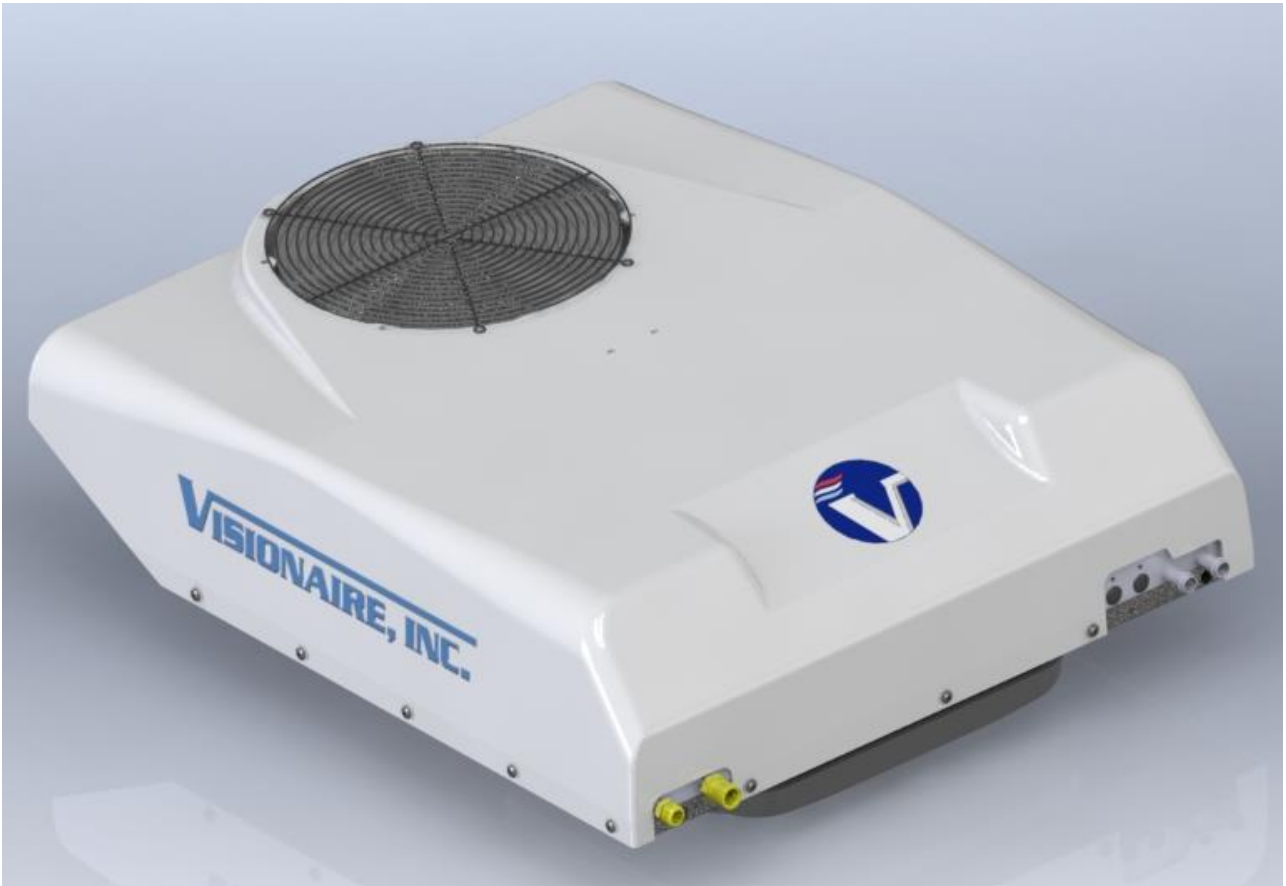




VISIONAIRE, INC.

47-7055-1000
47-7055-2000

Rooftop HVAC System
INSTALLATION INSTRUCTIONS



47-7055 Configurations	
VISPN	Description
47-7052-1190	12V, HVAC SYSTEM
47-7052-2190	24V, HVAC SYSTEM

NOTE:

1. Please read instructions completely before beginning work.
2. Check that all items listed on the 34-7055-001 installation kit have been included. (Figure 1)

UNIT INSTALATION KIT

ITEM NO.	VIS #	DESCRIPTION	QTY
1	16-92-4011	RUBBER SPACER	4
2	31-7055-006	FOAM GASKET	1
3	36-7055-002	BOLT KIT	1
3.1	36-038C300MBHG5	BOLT, 3/8"-16 X 3.00" LONG, HEX HEAD, ZINC PLATED, GRADE5	4
3.2	36-038FWZP-200	WASHER, FLAT , 3/8", OD 2.00", ZINC PLATED	4
3.3	36-038LWZP	WASHER, LOCK, 3/8", ZINC PLATED	4
3.4	36-010FWZP	WASHER, FLAT , #10, ZINC PLATED	4
3.5	36-010FLNZP	LOCK NUT, #10-32, ZINC PLATED	4
4*	12-39-1000	KAZOO TUBES FOR DRAIN HOSE	4
5*		SIKAFLEX 252 ADHESIVE	1
6*	16-91-2190	DRAIN HOSE CLAMP	4
7*	90-7055-006	CUTOUT TEMPLATE	1

OVERALL DIMENSIONS

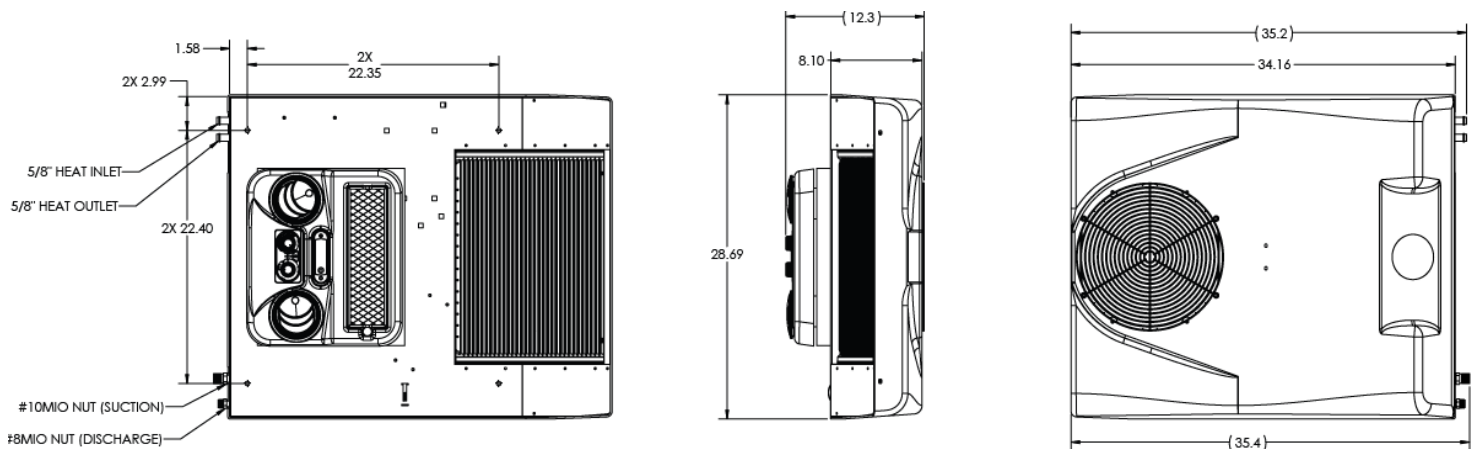


FIGURE 1

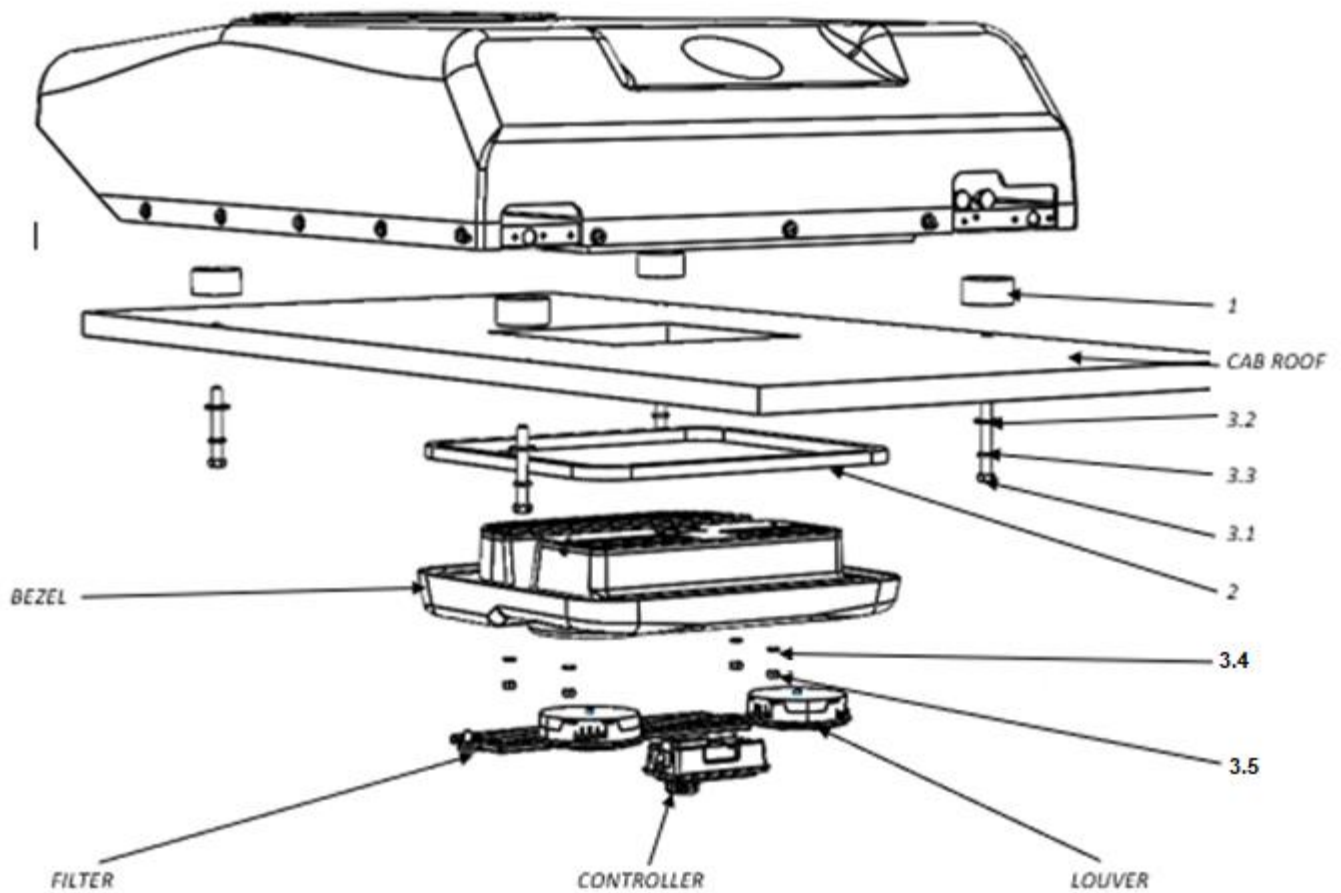


FIGURE 2

A. Mounting the Unit

1. Remove the headliner or loosen enough to drop the center portion (Disregard if no headliner).
2. Determine the most suitable location for mounting the air conditioning unit.
 - a. Mark the front-to-rear centerline of the cab on the outside of the cab roof.
 - b. Consider the position of the horn(s) and marker lights.
 - c. Ensure that air flow to the unit is not obstructed.
 - d. Do not mount the unit with the front lower than the rear, as this will prohibit water drainage.
3. Avoid cutting roof stiffeners if possible. If stiffeners are cut or roof is weakened due to the cut-out, reinforcement may be required.
4. Tape the template to the roof at the desired location. Mark the mounting hole location and the roof cut-out area (punch or scribe the roof).
5. Using the template provided (Item #7), cut the cab roof where marked and drill the 7/16" mounting holes. Remove burrs and sharp edges.

- Temporarily install the headliner and trace the cut-out onto it from the cab roof. Remove the headliner and cut out the area marked.

NOTE: Use caution and do not cut the headliner opening larger than the roof opening (check against template if in doubt).

- Should roof reinforcement be required, fabricate, and install at this time.
- Clean the outside roof area around the cut-out and mounting holes using Sikaflex 205 or equivalent cleaner.
- Apply a Sikaflex 252 (Item #5, Installer provided) to the holes of the 7/16" holes previously drilled through the cab. Area of coverage should be about the size of a dime.
- Apply Sikaflex 252 (Item #5, Installer provided) to both ends of the spacers (Item #1) and place one on each previously drilled 7/16" hole.
- Set unit on cab roof and spacers (Item #1). Line up mounting holes with spacers (Item #1) as possible.
- Apply Sikaflex 252 (Item #5, Installer provided) generously to the bottom outer edge of the gasket that is attached to the unit. See FIGURE 3.
- Set unit on cab roof and spacers (Item #1). Line up mounting holes with spacers (Item #1) as possible.
- Place a 3/8" lock washer (Item #3.3) and flat washer (Item #3.2) on each provided 3/8" hex bolt (Item #3.1). Prior to installing, apply a pea sized dab of Sikaflex 252 (Item #5, Installer provided) to the threads of each bolt (Item #3.1)
- Install and tighten hex bolts (Item #3.1) evenly until the spacers (Item #1) begin to take the load and bulge slightly and there should be about 1" of space between the cab roof and bottom of the unit (approximately 18lb-ft of torque). **Do not overly tighten.** Over tightening may cause the bottom of the unit and/or roof to distort resulting in water leakage. See Figure 4.

B. Refrigerant Hose Installation

- Install "O" Rings and connect AC hoses to fittings on unit (not provided).
- Route hoses over the top of the cab and down the back wall to the compressor. On tilt cab vehicles, route hose to the cab pivot point and then to compressor.
- Use clamps to secure hoses and prevent hose movement. Hoses must not come in contact with hot vehicle components, and they should not be subjected to mechanical abrasions.
- Install heating hoses to unit using connections on unit. See Figure 1.

C. Drain Hose Installation

- Make sure drain tubes are routed with a vertical run in them. Secure drain tubes with tie wraps. **Do not overtighten tie wraps** as this could cause inadequate drainage.
- Inspect to be sure that drain hoses are not kinked or squished, especially at the back of the cab.



- Install rubber kazoo tubes** (Item #4) at the end of the clear drain hose. Use tie wraps (Item #4) to secure kazoo tubes (Item #4). **Installation of the kazoo tubes are necessary for the system to drain properly.**

D. Wiring

Note: Unit is wired for a negative ground.

See Electrical wiring diagram FIGURE 3 in Page 7

NOTE: Unit is wired for a negative ground.

1. Disconnect battery.
2. **Orange and Black wires (condenser fan circuit):** Connect the Orange wire to the ignition switch supplied power through a 30 amp circuit breaker (20 amp/24V) and the black wire to ground.
3. **Red and Black wires (motor blower circuit):** Connect the red wire to ignition switch supplied power through 30-amp circuit breaker (20 amp/24V) and the black wire to ground.
4. **Green wire (compressor clutch signal):** Route the wire around the hinge point before connecting to compressor clutch on tilt-cab installations.

NOTE: Circuit breakers are customer supplied

E. Bezel

1. Install headliner (if it was removed).
2. Remove filter from bezel using thumb screw. Remove louvers. Place bezel on headliner locating on the four threaded studs. Install the provided #10 flat washer (Item #3.4), lock washer (Item #3.5), and hex nut (Item # 3.6) onto each threaded stud. Tighten until snug. Roughly 10lb-ft of torque. There are 2 studs located behind the filter, and 1 stud located behind each louver. See FIGURE 3.
3. Reinstall filter. The filter can be attached using the provided thumb screw.

F. Refrigerant Charging

1. Be sure that the unit is securely fastened to the roof of the cab before attempting to charge the system.
2. Use Refrigerant R134a. The unit accepts 2+/- .025 lbs. (.097Kg) of refrigerant (indicative of a system with 10 ft of hose)
3. **Reference the unit compressor for guidelines on the type of oil that should be used.** The unit accepts 3+/- .025 Oz (.85 Kg) (indicative of a system with 10 ft of hose)

NOTE: If more than 10 ft of refrigerant hose is required, please call Visionaire Inc at 1-(972)-647-1056.

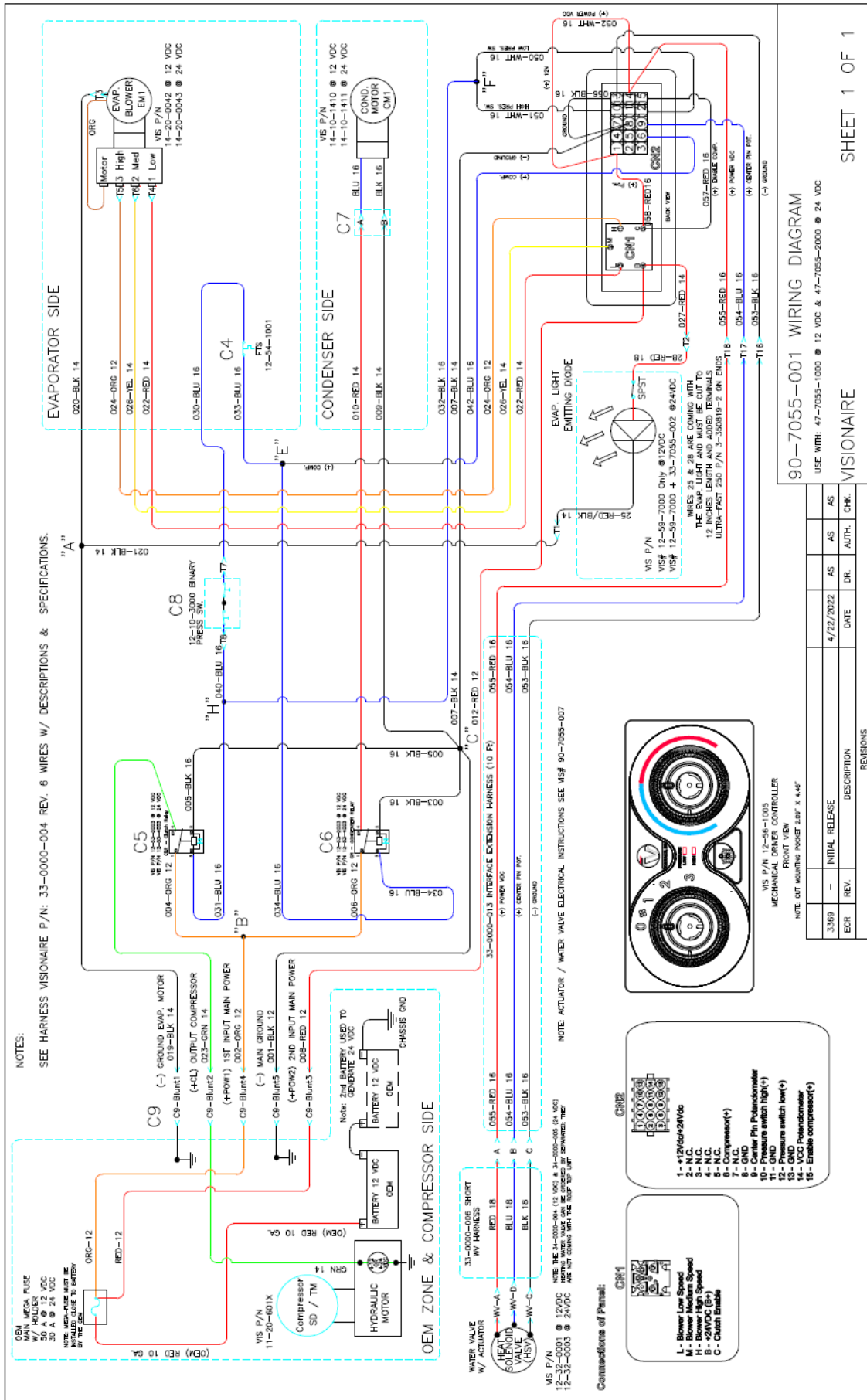
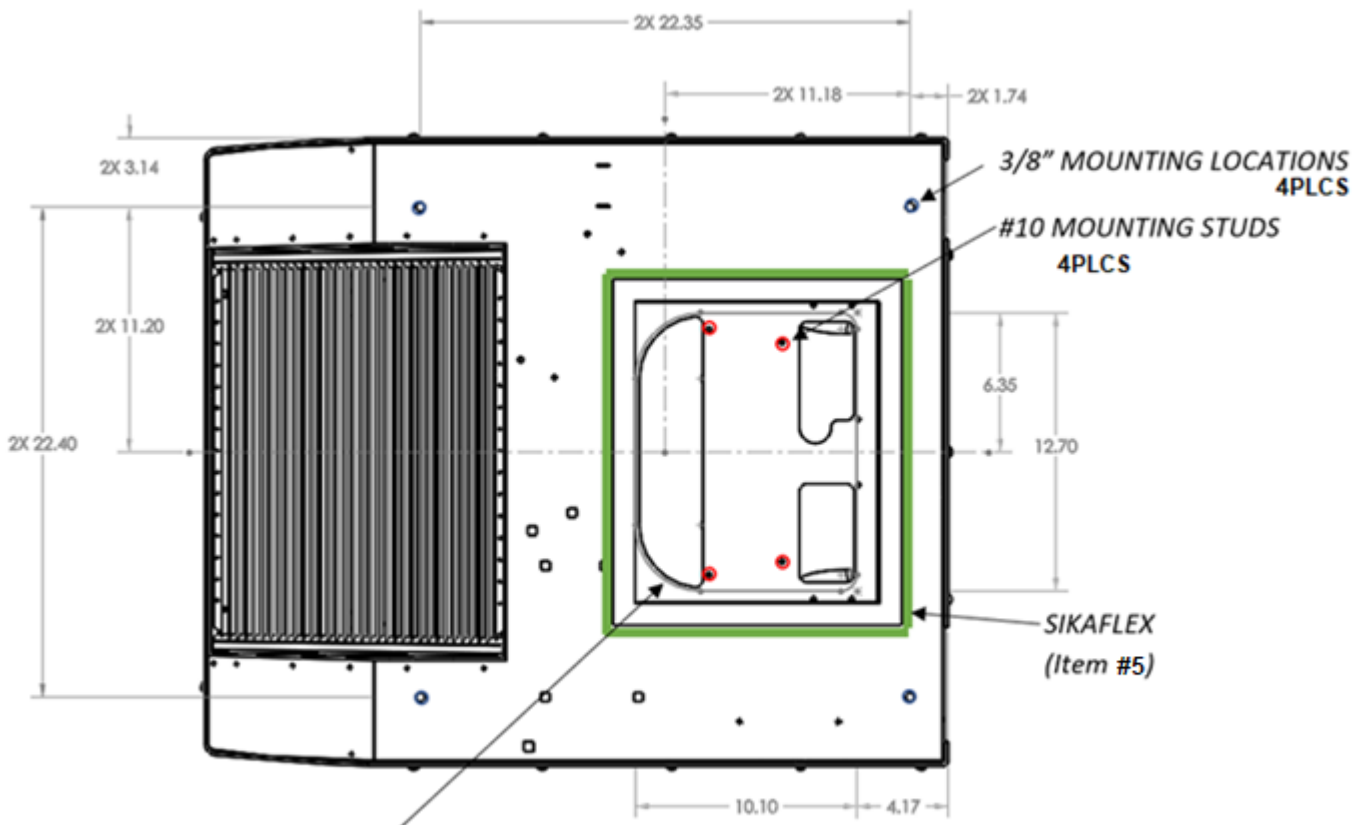


FIGURE 3



CUTOUT PROFILE FOR REFERENCE

FIGURE 4

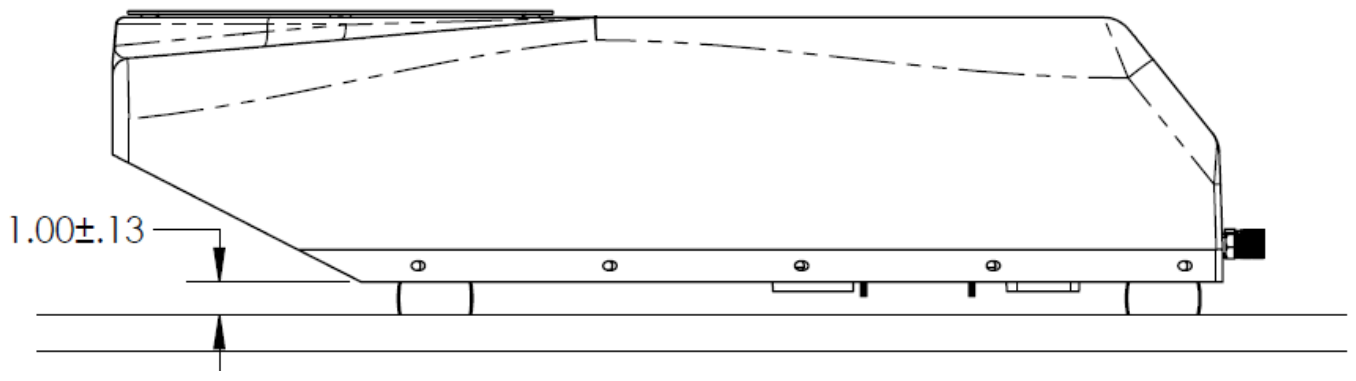


FIGURE 5

REVISION	Modification Details	RELEASED
ECR/ECN#: Revision #: 0-	Initial Release	By: MG Date: 07/28/21
ECR/ECN#: Revision #: 1-	FORMAT UPDATE	By: MG Date: 01/06/22
ECR/ECN#: 3500 Revision #: 2	FORMAT UPDATE, CHANGE FROM BOOKLET TO DOCUMENT	By: MG Date: 06/02/22
ECR/ECN#: Revision #: 3	UPDATED INSTALATION KIT WITH HARDWARE PART NUMBERS	By: MG Date: 07/20/22