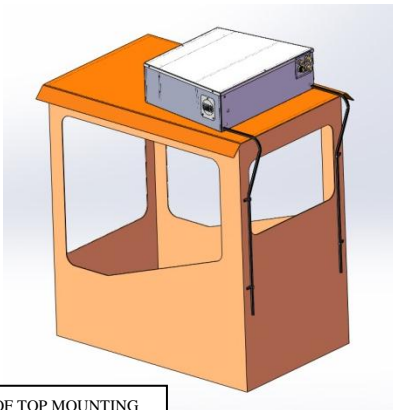


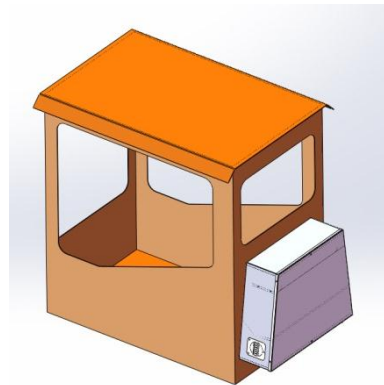
## INSTALLATION INSTRUCTIONS 4030 SERIES A/C HEATER - HORIZONTAL / VERTICAL

### BEFORE STARTING:

- 1) Please read instructions all the way through to familiarize yourself with the proper installation procedures.
- 2) Disconnect battery.
- 3) Make sure you have the required tools for the installation of the unit and to handle refrigerant R-134a.
- 4) The A/C unit must be kept clean and dry. Keep all caps on refrigerant hoses until they are connected.
- 5) Only CERTIFIED experienced mechanics should charge the system with R-134a.



ROOF TOP MOUNTING



WALL MOUNTING

TYPICAL INSTALLATION

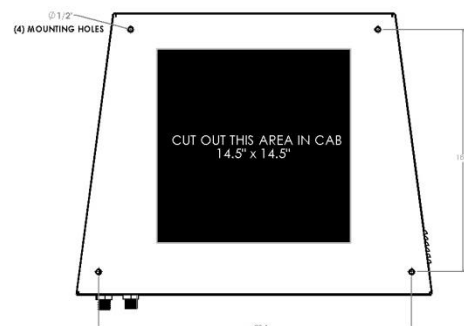


AIR DISTRIBUTION / TRIM

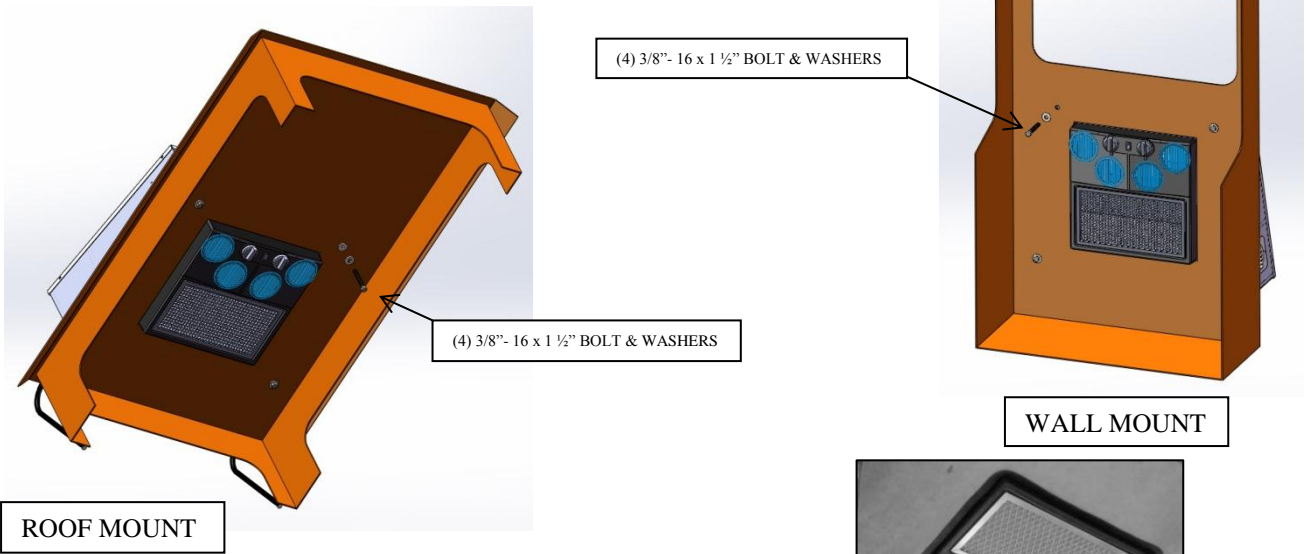
### MOUNTING THE UNIT:

- 1) Inspect the air conditioner. It is shipped with drain tube attached on each side. The air distribution plenum is attached and pre wired.
- 2) Use the "TEMPLATE" provided to choose mounting location. Avoid a location that requires cutting any of the roof stiffeners or any wall stiffeners. If stiffeners are cut additional reinforcements may be required. Do not cut or drill ROPS/FOPS components, block exits, or obstruct the equipment operator's view.
- 3) Mount the unit level or, with the roof mount, front slightly higher to ensure good water drainage, use spacers as required.
- 4) Thoroughly clean the area where the unit will be mounted. Using the template mark the cutout for the Distribution plenum and mounting bolt holes.
- 5) Remove headliner or inside wall, if present, and carefully cut the opening and drill the (4) 1/2" dia. holes you marked in step 4
- 6) Run a bead of sealant around the cutout and around the mounting bolt holes. Allow sealant to set at least partially.

NOTE: A full size template is provided



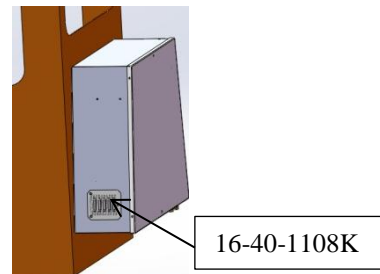
- 7) Carefully set unit in place, inserting the plenum through the opening. Install (4) 3/8-16 x 1 1/2" bolts, Flat washers, and lock washers to secure the unit. Tighten bolts to 25 lb-ft.



- 8) Trim the headliner or wall to clear Distribution Plenum. Reinstall headliner or inside wall. Trim around air plenum as required.

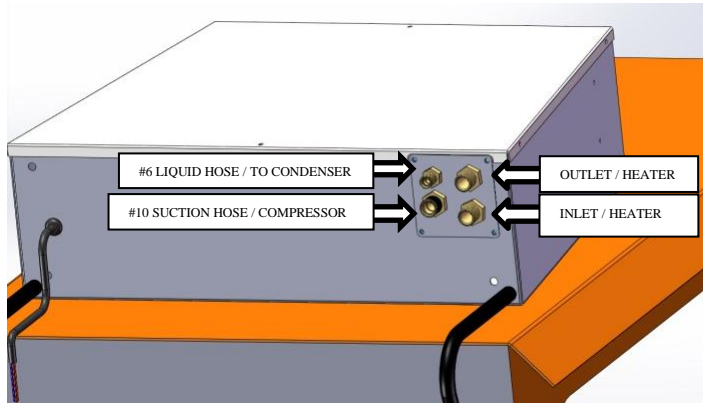


- 9) In vertical mount change Pressurizer Cover Louver to # 16-40-1108K This will keep water out.



## REFRIGERANT and HEATER HOSE INSTALLATION

1. Refrigerant hoses should be routed over the top of the cab and down the back or side wall to the compressor. For vehicles where the cab tilts or moves relative to the compressor ensure that the hoses will not bind or kink in any possible cab position. Secure hoses so they will not chafe or become damaged. Hoses must not come in contact with hot vehicle components; exhaust manifolds etc. Check to insure hoses will not be subject to mechanical abrasions.
2. A #12 suction hose is recommended for hoses over 10ft.
3. On units that have the optional heater attach hoses to the unit as shown below. Secure heater hoses along the refrigerant hoses.
4. Route drain tubes over top of cab secure with clamps or tie-wraps. Be sure drain hoses are at no point higher than where they leave the air conditioner. Do not let condensate drip on stairs or walkways where it could cause a slip hazard.

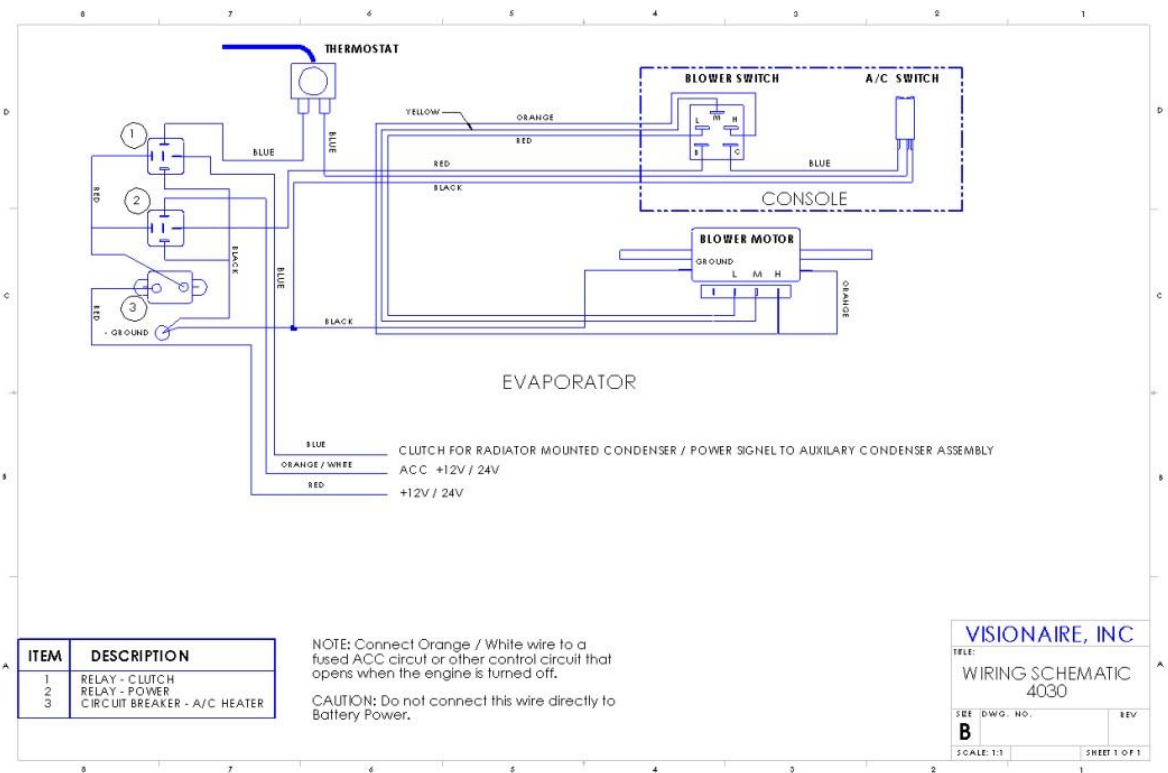
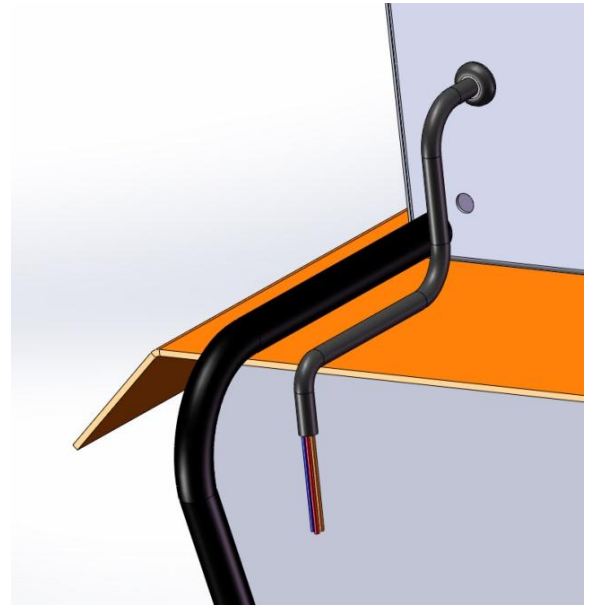


**HEATER HOSE:**  
 LOCATE FITTINGS (2) EA.  
 #10 O-RING STRAIGHT / 5/8 dia HEATER  
 UPSET.  
 ATTACH TO THE INLET AND OUTLET ON  
 THE BOTTOM OF THE UNIT USING (1)  
 #10 O-RING FOR EACH FITTING.

**ELECTRICAL CONNECTIONS**

1. Unit is wired for "CHASSIS GROUND."
2. **Orange/white wire:** Connect this wire to ignition switch or ACC terminal which supplies power through a 5 amp fuse for either 12V or 24V vehicles. This wire switches on the air conditioner's power circuit when the vehicle is on and disables the AC when the vehicle is shut off.
3. **Red/white wire:** Main power lead; connect this wire to a power source with min 35amp breaker (12V) or 20 amp breaker (24V) We recommend a 10ga wire from source to the unit.
4. **Blue wire:** Connect to AUXILIARY POWER CONDENSER, or if using a RADIATOR MOUNTED CONDENSER, connect to compressor clutch.

**CAUTION:** BE SURE THERE IS HI/LOW PRESSURE SWITCH INLINE BETWEEN THE EVAPORATOR AND THE COMPRESSOR.



## CHARGING AND FINAL CHECK

1. Only CERTIFIED experienced mechanics should charge the system with R-134a.
2. Evacuate the system, (min 30 minutes), check for leaks and charge with R-134a. Unit requires 2lb 4ozs – 2lbs 8ozs depending on hose length.
3. Add 4ozs of pag oil for hoses 15ft or longer.
4. Connect battery.
5. Turn the ignition switch to the “on” position, the blower switch to high speed, and clutch rocker switch to “on” position. (clutch switch will light up when in the correct position).
  - a. The a/c clutch will be engaged.
  - b. The evaporator blower will be on high speed.
  - c. The condenser fan will be turning.
6. Turn the fan switch to medium and low positions and evaporator motor should slow down.
7. Turn the switch to the “off” position. All motors, and clutch will turn off.
8. Start engine and run at 1500 rpm. Turn unit to full cold, high blower. Check gauges for normal pressures for R-134a.

## CONTROL LAYOUT

